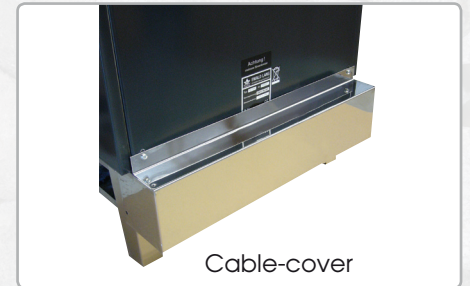




Exclusive model Type GSK 44

Optional equipment:



Cable-cover



Saunaheater – Standing model for private and commercial use in home and business saunas.

Saunaheater in clear classic design. The proven construction for decades in a double-casing execution with large ventilation cross-section offers best sauna thermic for every requirement.

The large air flow ensures a dry and optimal sauna climate.

Special advantages:

- „GSK“ Version = Greater Stone Kontainer for more effective infusions
- Heater railing made of wood, 2-sided (Front + 1 side) ➔ Optional: 3. + 4. side possible.

Optional equipment:

- Cable cover in chrome steel (mounting with rear panel)

It results in an extremely short warm-up time of the sauna room, and it also convinces by low-noise operation.

This means an environmentally friendly and economical operation of your sauna.

Technical Datas:

Outer casing:	optionally “real Enamel” – anthracite-colored (scratch-resistant, temperature-resistant, odorless) or in Chromium-steel (shiny – covered with a protection-foil).
Top-frame:	Stainless steel, brushed
Stone-basket:	Stainless steel, reinforced with “V-angle-struts”, without contact to the heating-elements
Rear/Backside:	galvanized-steel – optional in outer casing version
Radiator carrier sheet:	Chrome-steel
Inner casing:	Chrome-steel
Foot-frame:	Chrome-steel, with drip protection
Electric connection:	integrated, by 2 screws fixed rear panel
Heating elements:	á 1000 watts, very low heating rod load (3,2 watts/cm ²) and long life term
Heating capacities:	6 7 8 and 9 kW – 1 Power circuit 10 12 and 15 kW – 2 Power circuit
Power connection:	400V 3N AC
Dimensions (WxDxH):	44 x 44 x 82 cm; with oven railing: 66 x 66 cm
Safety distance:	minimum 10 cm on all sides to flammable parts
Stone filling:	ca. 35 kg
Heater weight net:	ca. 35 kg

Recommended room size of the sauna cabin according to the table. (Basic = RAL-Guideline for sauna cabins in buildings)

Heating-power kW	6	7	8	9	10	12	15
Suitable for Sauna cabins m ³	6 – 8	7 – 9	8 – 10	9 – 12	10 – 15	14 – 18	17 – 24