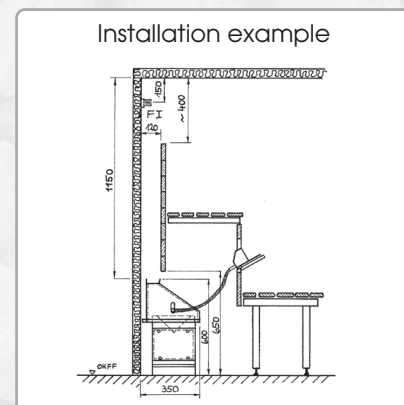
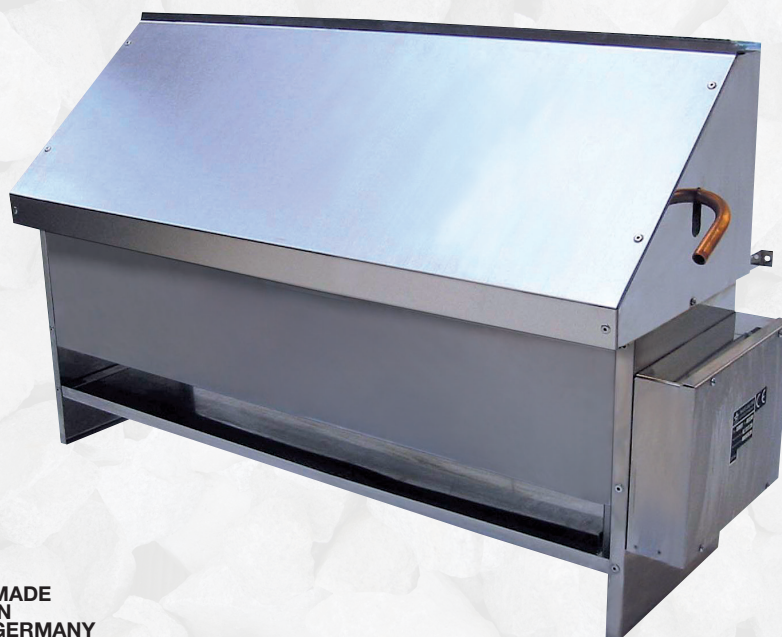


Lang's – „U-therm“

UNDERBENCH-SAUNAHEATER TYPE UE 35



Underbench-Saunaheater for private und commercial use in home, business and public saunas.

Indirect-Heating-System – Underbench-Saunaheater for the hidden installation offers:

- High Security → by installing under a bench and a shaft wall no direct contact with the heater is possible. Therefore particularly child-safe.
- Gentle sauna climate → by indirect and even heat distribution in the cabin.
- More cabin space → by more advantageous arrangement of the benches.
- Invisible heating power → additional heating power for large commercial properties.

Underbench-Saunaheater are completely made of chrome steel in two execution widths Type UE 35/100 cm and Type UE 35/132 cm.

Sauna-infusion via special devices, integrated drip protection tray.

Air-duct-hood from brushed chrome-steel, large Prism-Stone-support for effective Infusions.

Infusion pipe and power side connection flexible (left or right).

Technical Datas:

| | |
|----------------------|--|
| Casing: | Chrome-steel |
| Stone-basket: | Chrome-steel, over the entire width |
| Electric connection: | Junction box on one side of the heater (Heater flexibly rotatable) |
| Heating elements: | 1500 watts and 2000 watts, Heating rods depending on the heating power |
| Heating capacities: | UE 35/100: 4,5 6,0 7,5 and 9,0 kW – heating rods á 1500 W UE 35/132: 10,5 kW – rods 1500 W + 2000 W – 3 x 3,5 kW/phase UE 35/132: 12,0 kW – rods á 2000 W – 3 x 4,0 kW/phase (optional 2 power circuit 6 + 6 kW) |
| Power connection: | 400V 3N AC – 1 Power circuit (Optional: 2 Power circuit possible) |
| Dimensions (WxDxH): | UE 35/100: 100 x 35 x 60 cm UE 35/132: 132 x 35 x 60 cm |
| Safety distance: | laterally minimum 10 cm to flammable parts |
| Stone filling: | UE 35/100: ca. 20 kg UE 35/132: ca. 25 kg |
| Heater weight net: | UE 35/100: ca. 18 kg UE 35/132: ca. 20 kg |

Recommended room size of the sauna cabin according to the table. (Basic = RAL-Guideline for sauna cabins in buildings)

| Heating-power kW | 4,5 | 6,0 | 7,5 | 9,0 | 10,5 | 12,0 |
|------------------------------|-------|-------|--------|--------|---------|---------|
| Suitable for Sauna cabins m³ | 4 – 6 | 6 – 8 | 7 – 10 | 9 – 12 | 10 – 15 | 12 – 18 |