



Type W 10



Type W 10



Type W 20



### Lang's Wall-steamer – Optimal for additional and special use or retrofitting.

Combination unit with different models of Saunaheaters for a humidity sauna-bath.

Easy installation via integrated wall mounted brackets on the cabin wall, inside the protection grid of the sauna heater or optionally by special holders on the Saunaheater.

Optional equipment:

✦ Hook-in angle for mounting on the Saunaheater

✦ Inlay with a fine-sieve, made of stainless steel (for dry herbs) → only possible for Type W 20

✦ Automatic water-refill for Lang's „Vaporizer-systems“ over a external refill-box by a mechanic water-valve (Measures: circa 170/240 x 100 x 170 mm – WxDxH)

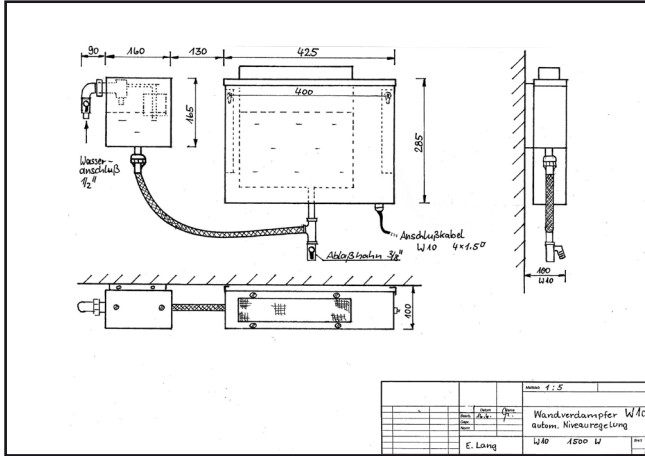
The small dimensions allow a flexible cabin design.

Casing in Chromium-steel, shiny or „real Enamel“ – anthracite-colored.

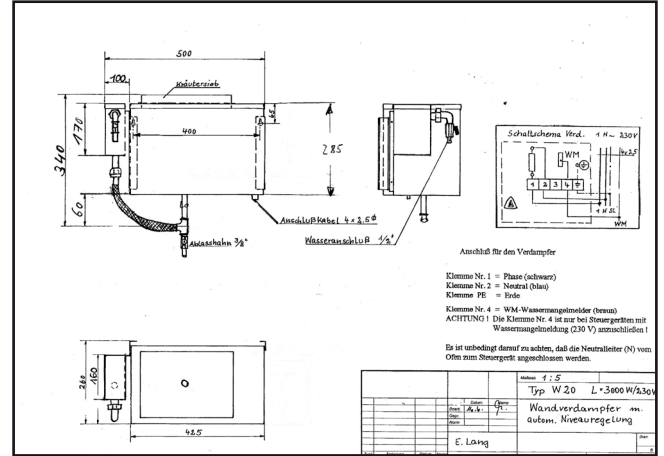
Incl. Aroma-tray with a aroma-mug (for flavour liquits) made of stainless-steel.



Mounting sketch Type W 10 with Automatic refill



Mounting sketch Type W 20 with Automatic refill



### Technical Datas:

<p>Casing:</p> <p>Head plate:</p> <p>Steam-box:</p> <p>Heating element:</p> <p>Bottom/connection plate:</p> <p>Safety distance:</p> <p>Vaporizer-power/</p> <p>Power connection:</p> <p>Dimensions (WxDxH):</p> <p>Steam-box filling:</p> <p>Steam output:</p> <p>Weight net:</p>	<p>In Chromium-steel (shiny – covered with a protection-foil) or optionally „<b>real Enamel</b>“ – anthracite-colored (scratch-resistant, temperature-resistant, odorless).</p> <p>Stainless steel, brushed</p> <p>Chrome-nickel-steel (CNS), with a drain-valve 3/8“</p> <p>1500 watts, made of a special stainless steel alloy with a overheat-protection-sensor against dry operation and warning buzzer</p> <p>galvanized steel sheet</p> <p>minimum 1 – 2 cm around to flammable parts</p> <p>W 10: 1,5 kW (1x1500 W) – 230V 1N AC ; incl. 3 meter Silicon-cable 4x1,5mm<sup>2</sup></p> <p>W 20: 3,0 kW (2x1500 W) – 230V 1N AC ; incl. 3 meter Silicon-cable 4x2,5mm<sup>2</sup></p> <p>W 10: 43 x 10 x 32 cm</p> <p>W 20: 43 x 26 x 32 cm</p> <p>W 10: ca. 5 Litre</p> <p>W 20: ca. 12 Litre</p> <p>W 10: ca. 2,4 kg/h</p> <p>W 20: ca. 4,5 kg/h</p> <p>W 10: ca. 6 kg</p> <p>W 20: ca. 8 kg</p>
---	--